



**WORLD'S BEST
ALLOY BULLBARS**

East Coast Bullbars (ECB Pty Ltd)

Tel: 07 3897 5700

Fax: 07 3283 1168

ecb@ecb.com.au www.ecb.com.au

29 Snook St
Clontarf QLD 4019
Australia

Po Box 122
Margate QLD 4019
Australia

BJ86SY

REPLACES: 09.06.17

REVISED: 06.11.20

FITTING INSTRUCTIONS

JEEP LAREDO GRAND CHEROKEE WK MY17 4/2017on WINCH COMPATIBLE BIG TUBE™ PROTECTION BAR WITH FOG LIGHTS VEHICLE FRONTAL PROTECTION SYSTEM (VFPS) FOR AIR BAG & ADR COMPLIANT VEHICLES

Check installation hardware before commencing.

Special tools: T20 Torx bit and associated drivers.

1. Lift bonnet.
2. Remove seven hand twist clips from under vehicle (three across centre rear, one (per side) from front of inner guard and one (per side) from side of bumper join accessible from area under front edge of inner guard. Remove black lower section of bumper bar by firmly pulling forward to release clips into coloured section of bumper. **See figure 1.**
3. Release from each side two 16mm head bolts from cradle (bracket) to remove. **See figure 2.**
4. Using a set of side cutters cut rear from two plastic rivets (per side) in front of wheel arches and remove one 10mm head bolt from join between coloured bumper and guard. Gently pull flare away from side of vehicle, unclipping push in clips from behind as you go. **See figure 3.**
5. Pull coloured section of bumper away from side of vehicle to release clips to side of guard, then forward to release clips under headlights. Repeat for other side. On top of bumper, remove two push pull plastic clips and lift up to unclip. Disconnect fog lights, parking sensors from driver side (if fitted).
6. Remove the headlight washer caps from the bumper, to remove pull out and un-clip.
7. Carefully remove parking sensors, parking sensor wiring harness (if fitted) and fog lights (unclip from three keepers) from coloured section of bumper.
8. Disconnect indicator and park light harness from the rear of headlight assembly and attach the supplied indicator harness to indicator and park light plugs then the adapter plugs to the original light plugs. To access rear of headlight on passenger side, open air box, remove filter and pull up on base to remove from rubber mounts.
9. To refit air box on passenger's side, remove rubber mounts and refit to air box. Push air box back onto body mounts, replace filter and refit lid.
10. Connect ECB Quick Click fog light wiring harness (supplied) into original wiring harness.
11. Remove polystyrene bumper support.
12. Drill 6mm hole through top bumper stiffener and lower grille locator. **NOTE: All drilled holes and any exposed metal must be treated with a rust inhibitor.** Remove two 10mm head bolts from grille locator. Using a jigsaw or similar tool, cut off lower section of bumper locator. **See figure 4.** Refit to vehicle using one M6 x 30 bolt, flat washers and nyloc nut.
13. Remove one 13mm head bolt from each side of bonnet lock. **See figure 5.** From front of chassis rails, remove two 13mm head bolts (per side) and one 10mm head bolt (per side) from bumper support to chassis rail. From rear of bumper support, remove one Christmas tree plug (per side). Remove bumper support from vehicle.



**WORLD'S BEST
ALLOY BULLBARS**

East Coast Bullbars (ECB Pty Ltd)

Tel: 07 3897 5700

Fax: 07 3283 1168

ecb@ecb.com.au www.ecb.com.au

29 Snook St
Clontarf QLD 4019
Australia

Po Box 122
Margate QLD 4019
Australia

14. Fit ECB winch cradle onto front of chassis rail using four M8 x 30 bolts, spring washers and large, 4mm thick M8 washers in front holes of chassis rails and four M10 x 40 bolts, spring washers and flat washers, in holes in underside of chassis rails. Install two M8 X 30 cap head bolts into radiator support stays through rear holes in ECB winch cradle. **See figure 6. Tighten all bolts.**
15. Fit fairlead roller to front of ECB winch frame using bolts supplied with winch. **Finger tighten only.**
16. Install winch into ECB winch frame using bolts supplied with winch.
17. Install control box mount (supplied) to rear of control box using bolts and nuts supplied with winch for warn winch and two M6 x 30 bolts, flat washers and nyloc nuts for mean mother winch. **See figures 7 and 8.** Fit winch control box to front of winch frame using two M8 x 30 bolts, flat washers, spring washers and nuts. **See figures 9 and 10.** Wire winch as per manufacturers instructions.
18. Using 50mm wide paper masking tape, run 1 line of masking tape under line on bumper. **See figure 11.** Using bumper detachment area as a guide, run paper tape along bumper join to meet paper tape on bumper line. **See figure 12.** Cut bumper along marked lines using a jigsaw or similar. **NOTE:** a small area above the mounts may need to be cut out to allow for mount adjustment.
19. Remove fog lights from plastic bumper using a small flat screwdriver. **See figure 13.**
20. Refit coloured section of bumper to vehicle as per reverse of step 5. As plastic rivets cannot be refitted to vehicle, drill rivet holes in coloured plastic section to 8mm and fit four plastic screw clips (supplied). Feed ECB wiring harnesses (supplied) through where fog lights are removed in original bumper.
21. Fit ECB LED indicator / park lights into protection bar as per instructions supplied with the LED indicator kit. **NOTE: Ensure park light is to outside. See figure 14.**
22. Attach ECB fog lights to protection bar. Place M6 x 20 bolts, spring washers (supplied) through light mount from inside and attach nut to top. Slide assembly into light mount in Protection bar and centralize light to hole. **TIGHTEN FIRM ONLY. See figure 15.**
23. Attach 6mm clip lock trim (supplied) to top of ECB protection bar. **NOTE:** Trim off lower edge on an angle so trim will sit flush with end of protection bar. **See figures 16, 17 and 18.** Attach 6mm clip lock trim to outer holes in skirt. Trim ends of clip lock trim square and place join on vertical edge.
24. Loosely zip tie parking sensor wiring harness into rear of ECB protection bar. **See figure 19 and 20.**
25. Ensure parking sensors have silicon ring around edge of sensor area of part. Install and adjust parking sensors into rear of Protection bar. Parking sensor fits through parking sensor mount. Install zip tie around mount and parking sensor to ensure firm fitment.
26. Tighten parking sensor wiring harness into rear of protection bar. Ensure wiring to parking sensors does not affect fitment of parking sensors.
27. Fit ECB protection bar to ECB winch cradle using M12 x 40 bolts, flat washer, spring washers and nuts (supplied). If winch is fitted, use bolts on wire on driver side of mounting. **Finger tighten only.**
28. Align ECB protection bar to front of vehicle. **See figure 21 and 22** for front and rear views. **Tighten all bolts.**
29. Connect indicator park lights and fog lights and check for correct operation.
30. Connect parking sensors and check for correct operation.



**WORLD'S BEST
ALLOY BULLBARS**

East Coast Bullbars (ECB Pty Ltd)

Tel: 07 3897 5700

Fax: 07 3283 1168

ecb@ecb.com.au www.ecb.com.au

29 Snook St
Clontarf QLD 4019
Australia

Po Box 122
Margate QLD 4019
Australia

31. Remove three 10mm head bolts and one plastic push pull clip from front of lower engine cover into radiator support. Fit ECB under bodyguard (supplied) onto rear of winch cradle and between lower engine cover and radiator support. Bolt to ECB winch cradle using three M6 x 20 bolts, flat washers and spring washers (supplied). Refit original bolts and plastic push pull clip to rear. **Tighten all bolts.**
32. Install ECB under body side covers (supplied) onto end of ECB under body guard and skirt return using four M6 x 20 bolts, flat washers and nyloc nuts (supplied). **Note:** Front of end on side plate sits under plastic bumper and rear of end plate sits behind plastic bumper. **Tighten all bolts.**
33. Place 40 x 6 alloy washer (supplied) between lower flange on coloured bumper section and ECB alloy under side cover. Use M6 x 40 bolt, flat washers and nyloc nuts (supplied) to secure lower flange of plastic bumper to ECB under side cover. **Note:** Inner guard lining at front of wheel arch needs to be clamped between centre under body guard and under side covers to secure in place to prevent rubbing on wheels **see figure 23**. Further access to rear bolt can be obtained through removal of plastic scrivet located higher in the wheel arch. **Tighten firmly.** Trim inner guard to match bottom of ECB under body side plates.

ENSURE NUMBER PLATE IS CLEARLY VISABLE

Note: When fitting/refitting the licence plate to the vehicle, ensure there is no obstruction to licence plate vision in accordance with local authorities. If required relocate licence plate to an alternate location.

Further VFPS Notes:

- a) Do not attach VFPS to the vehicle using anchorages not intended for this purpose (e.g. engine mounting bolts).
- b) Do not use this product for any vehicle make or model, other than those specified by the VFPS manufacturer.
- c) Do not remove the plaque or label from the VFPS.
- d) Do not modify the structure of the VFPS in any way.
- e) No accessory or fitment should project forward of the VFPS forward profile.
- f) **ENSURE THESE INSTRUCTIONS ARE LEFT WITH VEHICLE OWNER AND/OR OPERATOR.**

IMPORTANT INFORMATION

Periodically check bolts and nuts for correct tightness, especially if travelling on rough roads.

FITTING KIT

| | |
|---|--|
| 1 – ECB winch frame | 4 – M8 nuts |
| 1 – ECB winch control box mount | 2 – M6 x 40 stainless bolts |
| 1 – ECB alloy under bodyguard | 3 – M6 x 30 bolt |
| 1 – Pair ECB alloy under body side plates | 13 – M6 x 20 bolts |
| 2 – 40 x 10, 6mm alloy washers | 26 – M6 flat washers |
| 6 – M12 x 1.75 x 40 bolts | 10 – M6 nyloc nuts |
| 3 – M12 x 1.75 40 bolt and washer on 300 wire | 2 – M6 nuts and spring washers |
| 12 – M12 flat washers | 1 – ECB Indicator/ Park/ DRL light kit (ICLED105ECB) |
| 6 – M12 spring washers | 1 – ECB fog light kit |
| 6 – M12 nuts | 4 – Fog light trims |
| 4 – M10 x 1.5 x 40 bolts | 1 – Quick click fog light kit (IC10D40S1004ECBH) |
| 2 – 3/8 x 1 cap head bolts | 1 – Quick click Indi/park kit (IC17JEGCIPDH) |
| 6 – M10 flat washers | 1 – 2500mm length 6mm clip lock trim |
| 4 – M10 spring washers | 1 – 650mm length 6mm clip lock trim |
| 2 – 3/8 nyloc nuts | 2 – 350mm length 6mm clip lock trim |
| 6 – M8 x 30 bolts | 10 – 300mm zip ties |
| 2 – M8 x 25 bolts | 10 – 150mm zip ties |
| 4 – 5/16 x 1 ¼ x 10g thick flat washers (4mm Thick) | 4 – plastic screw clips (scrivets) |
| 8 – M8 flat washers | |



East Coast Bullbars (ECB Pty Ltd)

Tel: 07 3897 5700

Fax: 07 3283 1168

ecb@ecb.com.au www.ecb.com.au

WORLD'S BEST
ALLOY BULLBARS

29 Snook St
Clontarf QLD 4019
Australia

Po Box 122
Margate QLD 4019
Australia



Figure 1: Twist clip holding lower bumper to upper bumper sections

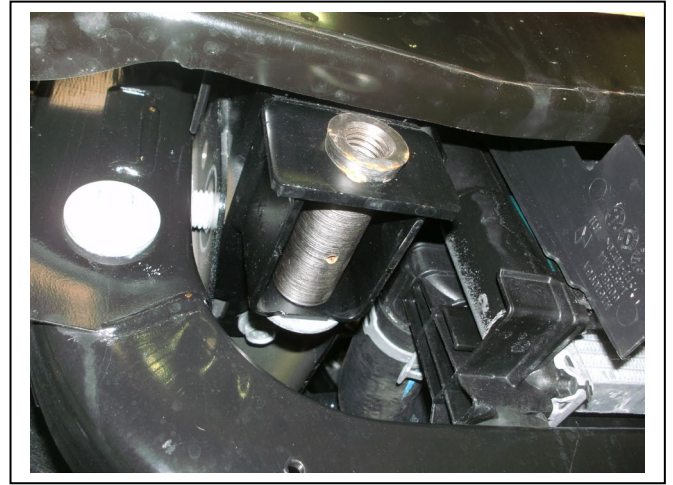


Figure 2



Figure 3: Bumper with lower section fully removed.

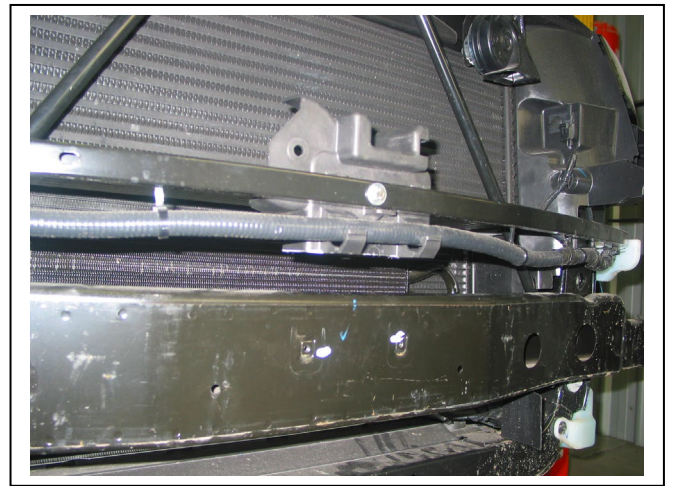


Figure 4: Hole drilled in grille locator and M6 x 35 bolt fitted.

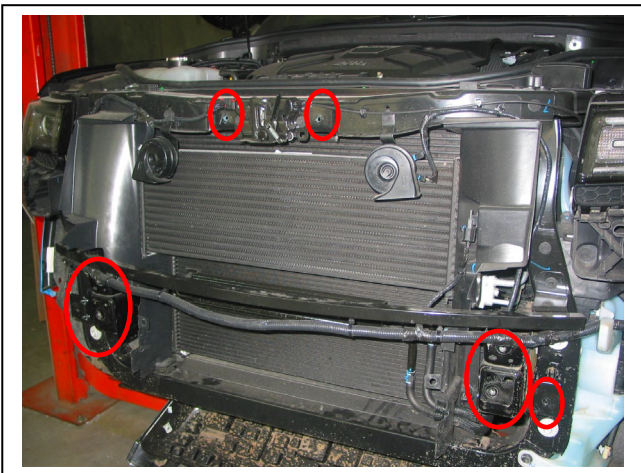


Figure 5: Bolts for removal of bumper support.



Figure 6:

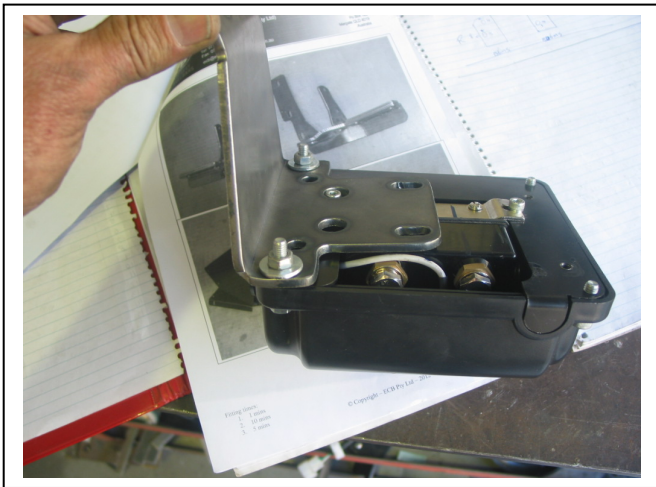


Figure 7: Mean mother control box with ECB control box mount fitted

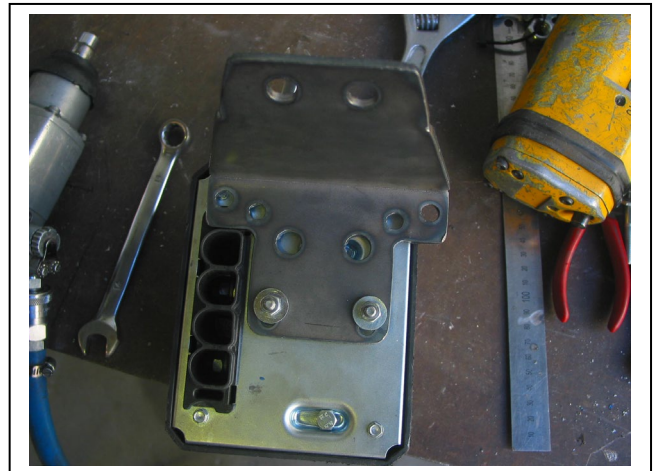


Figure 8: Warn control box with ECB control box mount fitted

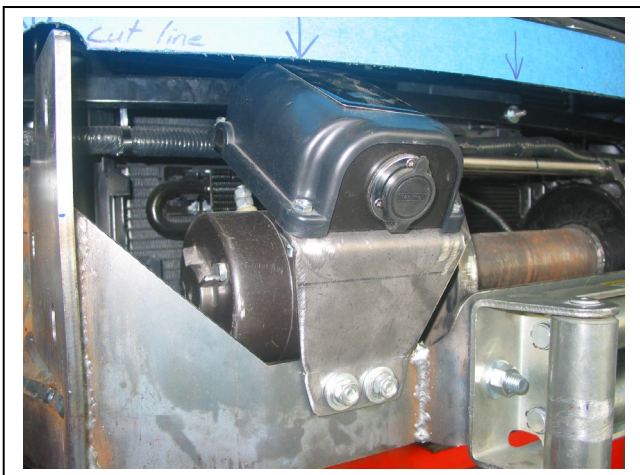


Figure 9: Mean mother control box mounted to winch frame.



Figure 10: Warn control box mounted to winch frame.



Figure 11: Top tape line on bumper. NOTE: Cut line is to bottom of tape.



Figure 12: side tape line on bumper. NOTE: Cut line on tape is to the inside.



East Coast Bullbars (ECB Pty Ltd)

Tel: 07 3897 5700

Fax: 07 3283 1168

ecb@ecb.com.au www.ecb.com.au

29 Snook St
Clontarf QLD 4019
Australia

Po Box 122
Margate QLD 4019
Australia

WORLD'S BEST
ALLOY BULLBARS

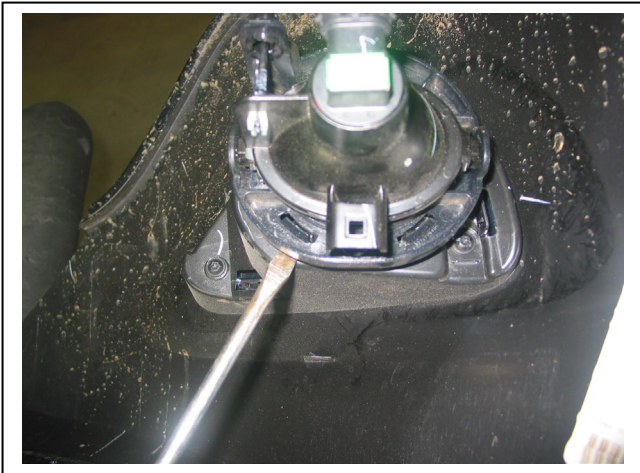
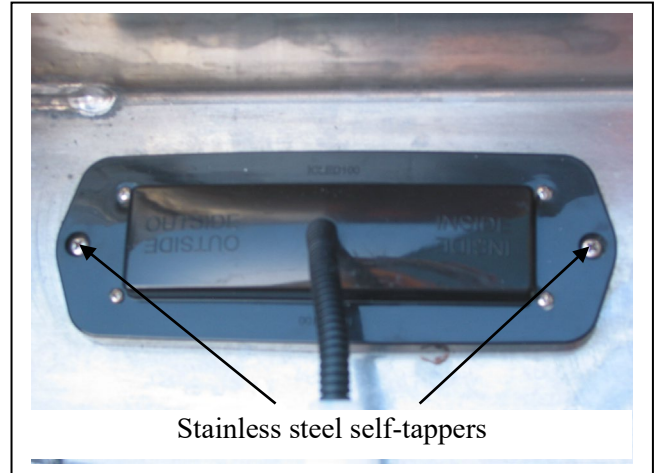
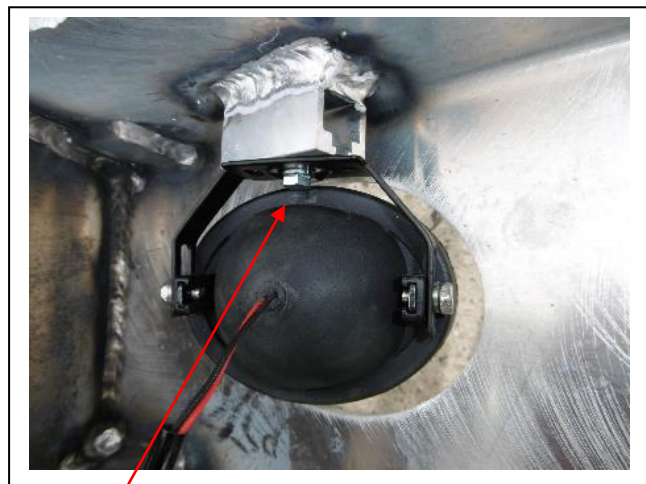


Figure 13



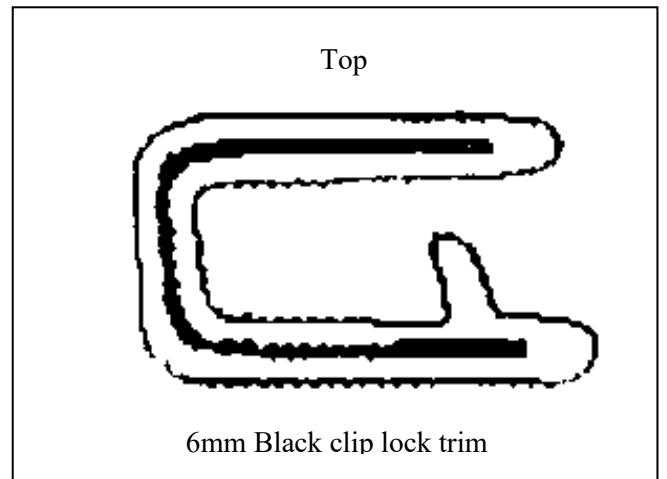
Stainless steel self-tappers

Figure 14



M6 bolt

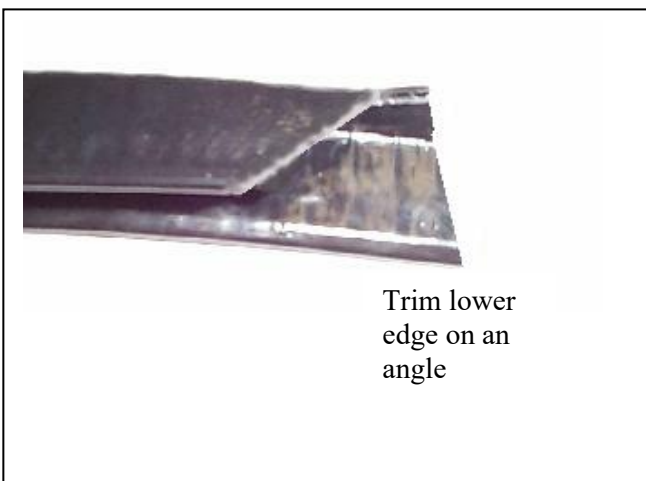
Figure 15



Top

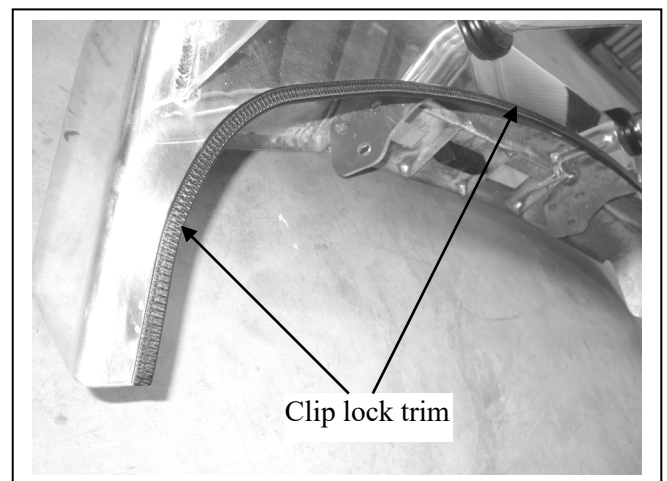
6mm Black clip lock trim

Figure 16



Trim lower
edge on an
angle

Figure 17



Clip lock trim

Figure 18



East Coast Bullbars (ECB Pty Ltd)

Tel: 07 3897 5700

Fax: 07 3283 1168

ecb@ecb.com.au www.ecb.com.au

29 Snook St
Clontarf QLD 4019
Australia

Po Box 122
Margate QLD 4019
Australia

WORLD'S BEST
ALLOY BULLBARS



Figure 19: wiring harness wired into rear of Protection bar

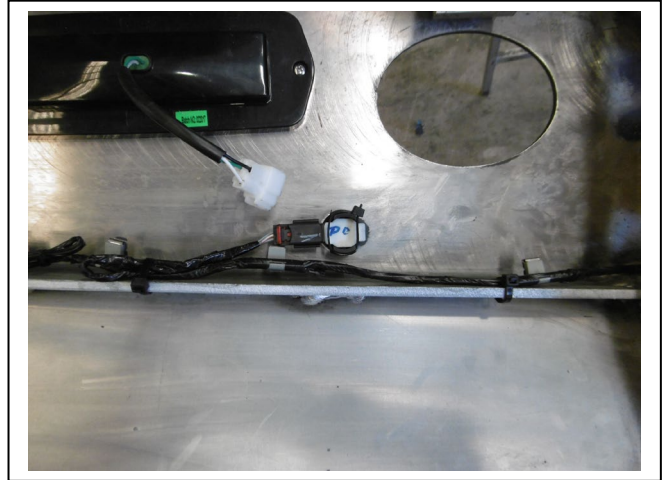


Figure 20: Mounted parking sensor



Figure 21: Front view



Figure 22: Side view

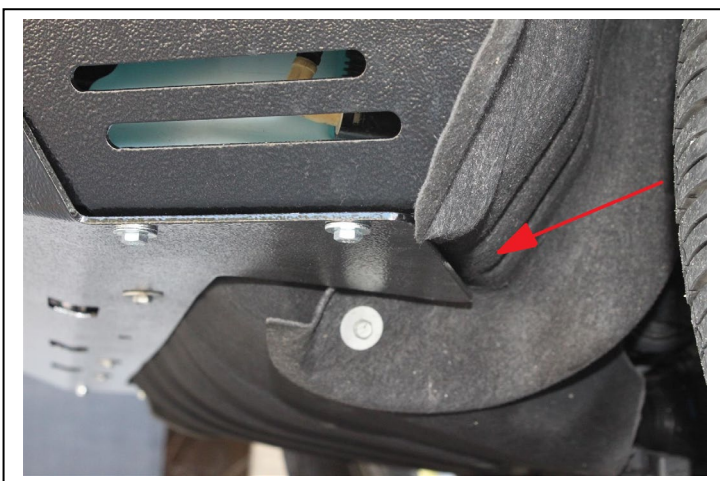


Figure 23



**WORLD'S BEST
ALLOY BULLBARS**

East Coast Bullbars (ECB Pty Ltd)

Tel: 07 3897 5700

Fax: 07 3283 1168

ecb@ecb.com.au www.ecb.com.au

29 Snook St
Clontarf QLD 4019
Australia

Po Box 122
Margate QLD 4019
Australia

We value your comments

Dear Fitter,

ECB would like to know how you went with the installation of this product. We value your comment and may need to contact you to clarify some details so please complete your contact details clearly.

We would appreciate if you could complete as many of the following details as possible.

| | |
|-------------------------------|--|
| Your Name: | Your contact No. |
| Product Part No. | Product Invoice No. |
| Product Description: | Make, model, and year of vehicle: |
| Product Work Order No. | Company your from/Company product purchased from: |

Date of Fitment: ____/____/____

Was the fitting hardware supplied complete?

Yes

No

If no what was not supplied

Did the installation go well?

Yes

No

Please provide comments

Please draw diagrams if you need to.

Post to
Reply Paid 122
PO Box 122
Margate QLD 4019

Fax to
(07) 3283 1168



WORLD'S BEST
ALLOY BULLBARS

East Coast Bullbars (ECB Pty Ltd)

Tel: 07 3897 5700

Fax: 07 3283 1168

ecb@ecb.com.au www.ecb.com.au

29 Snook St
Clontarf QLD 4019
Australia

Po Box 122
Margate QLD 4019
Australia

DESPATCH CHECKLIST BJ86SY

| | | |
|--------------|--|---|
| Work Order # | | See other side of this page for photos of all mounts |
| Finish: | | |
| Transport: | | |
| Due Date: | | |

- OC.....1 – Steel winch frame
- OC.....1 – Steel control box mount
- OC.....1 – Alloy under body guard (P/C black ripple all bars)
- OC.....1 – Pair alloy under side covers (P/C black ripple all bars)
- BK.....1 – Bolt Kit.
- BK.....1 – LED ECB indicator / park light kit. (ICLED105ECB)
- BK.....1 – ECB fog light kit
- BK.....1 – Quick click indi/ park light kit (IC117JEGCIPDH)
- BK.....1 – Quick click fog light kit (IC10D40S1004ECBH)
- BK.....4 – fog light trims
- BK.....1 – 2500mm length 6mm clip lock
- BK.....1 – 650mm length 6mm clip lock trim
- BK.....2 – 350mm length 6mm clip lock trim
- OC.....2 – ECB Overrides – **Fitted to Bar**
- OC.....2 – 6mm Air Vents – **Fitted to Bar**
- OC.....6 – ECB plastic parking sensor plugs - **Fitted to Bar**



Is this product “the best it can be” Yes _____ / _____

Wrapper’s initials / Checker initials

If **NO** fix before continuing

All parts checked and completed by:

Nut and bolts: _____ Date ___ / ___ / ___

Order control: _____ Date ___ / ___ / ___

Final wrap check: _____ Date ___ / ___ / ___



East Coast Bullbars (ECB Pty Ltd)

Tel: 07 3897 5700

Fax: 07 3283 1168

ecb@ecb.com.au www.ecb.com.au

29 Snook St
Clontarf QLD 4019
Australia

Po Box 122
Margate QLD 4019
Australia

WORLD'S BEST
ALLOY BULLBARS

